

SE.1/4, OF THE NE.1/4, OF  
SECTION 34, T6N., R1W., S.L.B.&M.

IN OGDEN CITY  
SCALE 1" = 100'

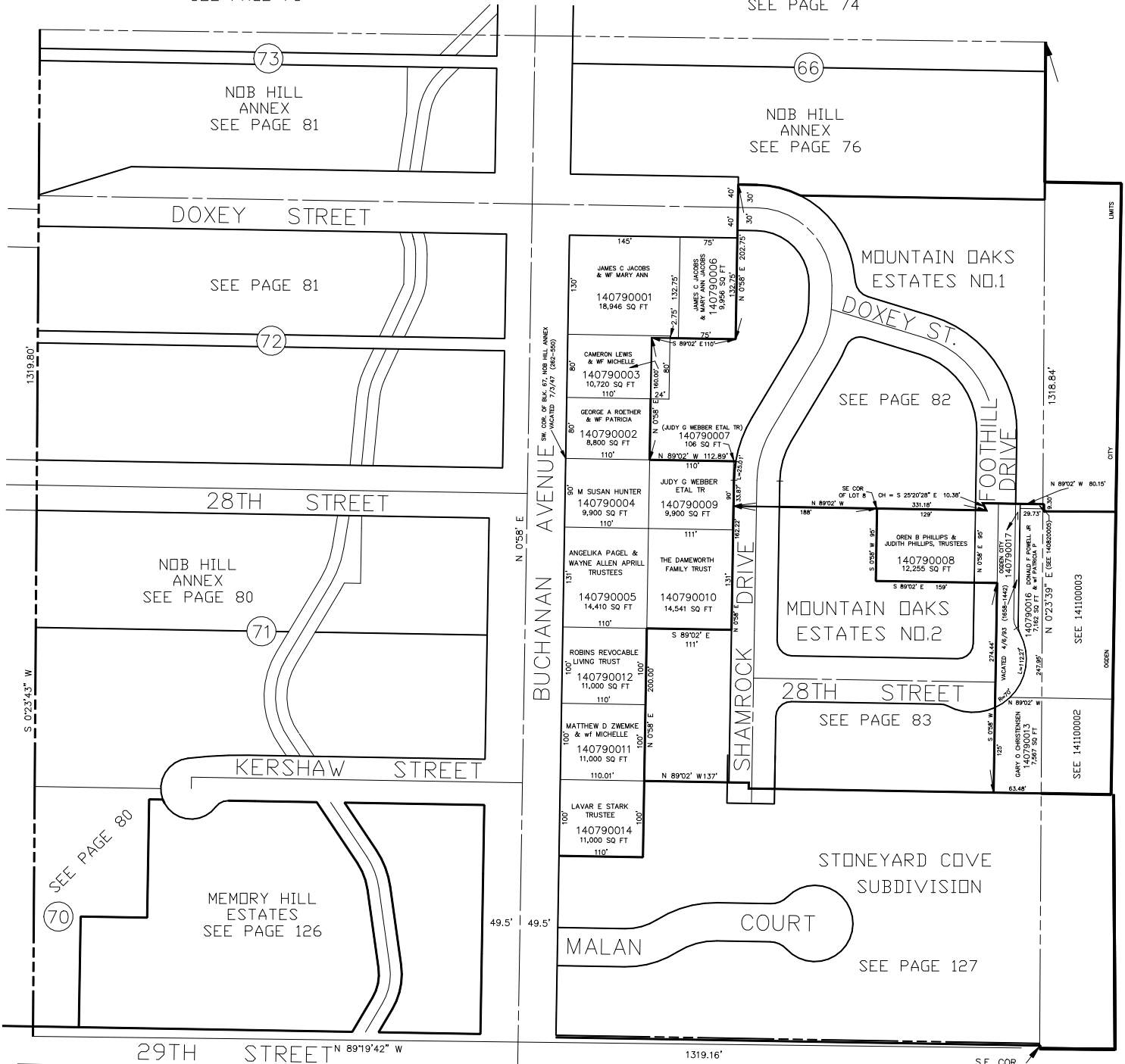
TAXING UNIT: 25

SEE PAGE 78

SEE PAGE 74

SEE PAGE 97

SEE PAGE 110



SEE PAGE 103

ALL PLATTING IN AND BETWEEN  
BLOCKS 67, 68 & 69  
VACATED 7/47 (262-550).

PLATTING SOUTH OF 1/4 SECTION LINE  
VACATED 11/2/49 (323-510).

S.E. COR.  
OF N.E. 1/4